



# Barthol Chapel Primary School



## May 2012 Newsletter

Dear Parents

Welcome to term 4. I hope you have all had a lovely Easter break. If you have any questions or would like further information please do not hesitate to contact me. Please note that dates highlighted in red are new dates for your diary.

With kind regards, Katie Budge

## Fundraising Update

### Sunday 20<sup>th</sup> May

Tesco will end this year's schools voucher initiative on Sunday 20<sup>th</sup> May.

Thank you to everyone who has donated school vouchers already and please keep collecting vouchers for Barthol Chapel.



We collect ink cartridges

- Canon
- Dell
- HP
- Lexmark
- Phillips
- Samsung
- Sharp

We collect Toners

- Brother
- Canon
- Dell
- Epson
- Hp
- IBM
- Lexmark
- Panasonic
- Samsung
- Xerox



<http://www.easyfundraising.org.uk/causes/bartholchapelpc>

### Barthol Chapel Parent Council - Inverurie

Would you like to raise money for Barthol Chapel Parent Council every time you shop online?

**1** Login online



Join easyfundraising and select your cause, school, club or charity

**2** Start shopping



Follow links to over 2000 leading online retailers and shop as normal

**3** Generate donations



Online purchases earn an automatic donation to your chosen cause

### Netball Fundraising

Thank you to everyone who has returned their Smarties tubes to school already. Please return tubes before **Friday 25<sup>th</sup> May**.

The children are very much enjoying netball training this year and have been thoroughly enjoying the local netball festivals.

Our team won 14 out of 15 games at the Westhill Academy Netball Festival. Well Done Barthol Chapel!

# School Clubs

## Netball Training Sessions

Every Thursday 3:30pm – 4:30pm

Open to Primary 4 to Primary 7 Children

Cost: £8 per term

Please note that all monies collected go towards transport costs of future netball festivals.

### Netball Diary Dates

Thursday 17<sup>th</sup> May NO NETBALL

Thursday 24<sup>th</sup> May Kintore Netball Festival

3:15 – 6:45

Thursday 21<sup>st</sup> June Inverurie Netball Festival (Garioch Centre)

10:00 – 1:00

Thursday 21<sup>st</sup> June Netball Pool Party

Thursday 28<sup>th</sup> June NO NETBALL



## Recorder Classes

Open to Primary 3 to Primary 7 Children

Thursday Afternoons

*(During the School Day)*

*We are always looking to start new clubs or one off workshops.*

*If you have an interest or talent you would like to share with the children. Please let us know.*

*We would love a parent to step forward to train our netball team. Don't worry if you haven't played netball before we have training courses available and a super team that will help.*

*The children have also asked for an after-school rugby club. If any parent would be willing!*



## Football Training Update

**Friday from 3:30 to 4:30, Barthol Chapel Primary School, Open to Primary 2 to 7 pupils.**

Training Dates Friday 11<sup>th</sup>, 18<sup>th</sup>, 25<sup>th</sup> May and Friday 8<sup>th</sup>, 15<sup>th</sup>, and 22<sup>nd</sup> June

### Football Festival Dates

Monday 21<sup>st</sup> May Rothienorman Primary School (4:30pm – 6:30pm)

Saturday 26<sup>th</sup> May Fyvie Tournament (9:30am)

Saturday 16<sup>th</sup> June – Monymusk Tournament (10:30am to 1:00pm)



# School Reminders

## School Attendance

We are continually working hard to ensure our attendance rate at Barthol Chapel Primary is as good as other schools in the authority. We will be working closely with our attendance officer and other partner agencies to help us to do this, but most importantly we need your support.

To date we have **76** unauthorised absences.

**If your child is absent from school. Please contact the school office before 9:30am to inform us of your child's absence.**

## Late Attendance

If your child is late for school please report to the school office with your child to ensure they are safely in school care.

If your child will be arriving to school later than 9:30am please contact the school office with child's lunch order. After 9:30 we are unable to order a school lunch and your child will require a packed lunch.

Please note that children should enter school by the children's entrance. As the main entrance is also a cycle entrance.

## Medical Information

Please update the school office with any additional medical conditions. Please note that no child should have any medication in their school bag. If your child does require medication please complete an 'Administer of Medication Form'. We will not be able to give your child any medication unless we have this form.

## Lost Property

Please ensure that your child's clothing is named.

Please ensure your child has a gym kit in school at all times.

## Homework

Please ensure that your child becomes familiar with the routine of keeping all their school homework in their school bag at all times. Term 4 is a busy term and some reading days may change due to excursions or special visitors to school.

Thank you

# Diary Dates

## May 2012

10 <sup>th</sup>		Pupil Reports
14 <sup>th</sup> – 18 <sup>th</sup>		P7, P6 and Miss Budge - School Camp
22nd	2:10 - 3:30	Going for Gold Performance (Tea and Coffee will be available after the performance)
22nd	2:30 – 3:30	Primary 1 Fifth Visit - Parent Induction Numeracy
22nd	2:00 – 3:00	Mrs Rodgers working with Senior Pupils Mrs Macdonald working with Infant Pupils
22nd	3:45 – 5:45	Parents Night
22nd	7:00	Parent Council Meeting
23 <sup>rd</sup>	6:00 – 8:00	Parents Night
24th	9:30 – 10:30	Senior Workshop SSPCA – Food and Farming
24th	11:00 – 11:30	Infant Workshop SSPCA – Food and Farming
24th	3:15 – 6:45	Kintore Primary Netball Festival
25 <sup>th</sup>	2:30 – 3:30	Coffee Afternoon
29 <sup>th</sup>	12:30 – 1:30	Primary 1 Sixth Visit – Lunch

## June 2012

1 <sup>st</sup>	2:00 – 7:00	Jubilee Sports and Family Fun Evening
4 <sup>th</sup>		Occasional Day – School Closed
5 <sup>th</sup>		Queens Jubilee Holiday
6 <sup>th</sup>		Health Week Alec Caravan Visiting
7 <sup>th</sup>	9:15 – 10:45	P7 Road Safety Meldrum Visit
8 <sup>th</sup>	8:00 – 9:15	P7 Strawberry Tea Morning – Ex Pupil Visit
12 <sup>th</sup>		P7 Academy Visit Day P3 Visit Senior Class 9:30 – 10:45am
13 <sup>th</sup>		P7 Academy Visit Day P3 Visit Senior Class 11:00 – 12:30am
14 <sup>th</sup>		P7 Academy Visit Day P3 Visit Senior Class 1:30- 3:30pm
21st	10:00 – 1:00	Inverurie Netball Festival
22 <sup>nd</sup>	7:00 – 9:00	Music Recital Evening- 7:00pm
26 <sup>th</sup>		<b>Bring your bike to school day</b>
27 <sup>th</sup>	2:00 – 3:00	<b>Children's Fun Talent Show</b>
28th	9:15 – 3:30	Whole School Trip Aden Country Park
29 <sup>th</sup>	2:00 – 3:30	Last Day Leavers Assembly/Coffee Afternoon

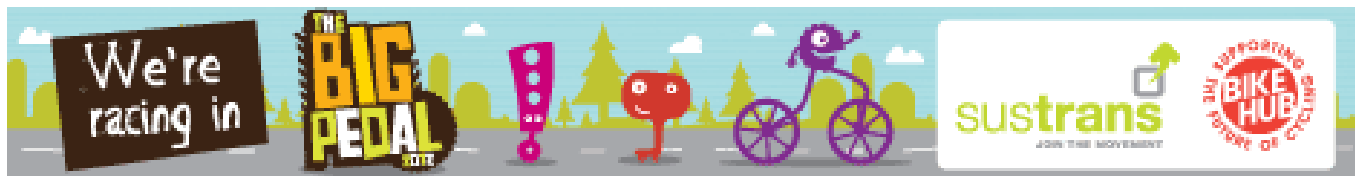
Please find attached holiday dates for 2012/2013 (Appendix 2)

# Summary of Events and Special Days



## RSPB Update

Sue Dingle from RSPB has awarded Barthol Chapel Primary School with the RSPB 'Bird Friendly School Award'.



We would like to thank everyone for taking part in the 'BIG Pedal'. We came in 9<sup>th</sup> overall in the small schools Scottish category. There is a real buzz in school and children are really enjoying learning about cycling safety. The children have asked for further 'Bring your bike to school days' which we are only too happy to encourage.

Bring Your Bike to School Day: June (Weather Permitting)



## Playground Update

We now have installed a new notice board and entrance signs. We have also had installed a log traverse and climbing wall. Thank you to Martin our school janitor for painting our picnic benches. Martin is hoping to complete the painting of benches on his return to school. Our garden area is slowly taking shape. During the holidays steps to our new garden were built.

Our next steps:

- We are awaiting our garden area to be barked. Once this area has been barked we will be able to install the new large planters, garden sign and flower seats which have been purchased.
- Due to the heavy snow in the holidays some branches from a tree in our playground have snapped. This has been reported and will be shortly remedied.
- We have also been advised that our goal post will be taken away for refurbishment this term.





### Eco News

Our Primary 6 pupils along with Mrs Rodgers attended a cluster schools Eco day at Haddo house. This was a super event and the children have returned to school with lots of ideas on how we can further develop our playground and promote Eco values within our school. The children returned to school with their very own hand made bird box. With participating in this event our school was also given £200 worth of Eco resources to support our new garden, mini-beast hotel area and classroom learning.



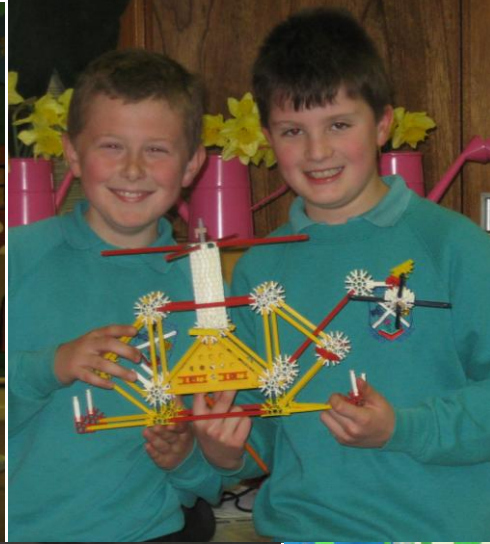


# Term 3 Highlights

- Hannah Miley visited our school
- Titanic open classroom
- Meldrum Rugby Festival (Barthol Chapel won all 14 games!)
- We had a mobile farm visit our school.
- Children participated in 'RSPB Bird Friendly School' workshops
- A very special lamb visited our infant class
- Many of the children participated in Barthol Chapel Scots Night
- Our senior class visited the Kings Museum and participated in Victorian and Egyptian workshops.
- Senior pupils successfully took part in Orienteering event at Bennachie.
- Gymnastics workshops
- The big pedal!
- Barry Hutcheson author visit as part of our school World Book day celebrations.









# Term 4 Events

## Olympics

This term all the children will be studying the Olympics. This topic will focus on the Curricular Areas of Literacy and English, Health and Wellbeing, Technology and Social Studies.

The children have already been taking part in London 2012, Get Set workshops through assembly and classroom learning sessions. **Get Set** study workshops are built around the seven Olympic and Paralympic Values, and the **Get Set network** programme provides children and young people with a chance to prove that they too can reflect the Values in their lives, places of learning and local communities.

<http://getset.london2012.com/en/home>

These Values are:

- respect – fair play; knowing one's own limits; and taking care of one's health and the environment
- excellence – how to give the best of oneself, on the field of play or in life; taking part; and progressing according to one's own objectives
- friendship – how, through sport, to understand each other despite any differences

The Paralympic Values are based on the history of the Paralympic Games and the tradition of fair play and honorable sports competition.

They are:

- courage
- determination
- inspiration
- equality

### **Tuesday 22<sup>nd</sup> May 2:10pm – Going for Goals Olympic Performance**

On Tuesday 22<sup>nd</sup> May, Konflux Theatre Company will be working with our senior class to create and perform a play in a day. Rayne North senior class will also be participating in the drama workshop and performance. Infant children will be invited to come and watch the play at 2:10pm

Konflux Theatre in Education is a children's theatre company touring Scotland and the UK with workshops and performances for young people.

The workshops involve working interactively with groups of pupils in schools and all types of venues incorporating drama as an integral part of personal and social development. Workshops inspire creative thinking and imaginative ideas they also engage the young people's interest and involvement. Workshops are linked closely to key areas within the Curriculum for Excellence, in particular Expressive Arts and Health and Wellbeing.

Our Play in a day workshops aim to encapsulate the 4 key capacities of the Curriculum for Excellence to enable each child or young person to be a successful learner, a confident individual, a responsible citizen and an effective contributor.

Konflux Theatre's workshops allow learners to have rich opportunities to be creative and experience inspiration, confidence and enjoyment. Children and young people to use their skills developed in the workshop to present their work to their peers, teachers and parents.

The workshops give children and young people the opportunity to recognise and nurture their creative and aesthetic talents allowing them to develop skills and techniques that are relevant to specific art forms. Through this we aim to further develop the children's skills to help them encapsulate the key four capacities.

## Play Synopsis

What do the Olympic Games mean to you? Medals? Glamour? Money and publicity? Or a chance for the crowd to wave to Mum on the telly?

The impact of hosting the 2012 Games will be enormous but what's it really all about? For our lively and dynamic young actors the Games and all they entail represent a timely reminder that we all have a valid contribution to make. From sporting excellence to social cohesion it's all here in this 'Play-in-a-Day' providing a potted history of the Olympic movement like you've never seen before - complete with an host of colourful and eccentric characters - from ancient Greece to the present day.

Over the course of a stimulating day with support from a professional Director the students will explore a wide range of topical issues. Working together as actors to create a fun and action-packed 15 minute performance which informs as much as it entertains. Key themes such as the value of teamwork, personal discipline, self-expression, healthy lifestyles, confidence building, problem solving and... Oh yes... FUN... all play a big part in this unique learning experience. As we race against the clock, storm into the lead and sprint down the home straight, throw in more facts and historic detail than you can shake a javelin at and we're all going for gold.

Other important messages in the performance include; inclusion and togetherness (everyone has a valued contribution to make), inspirational thinking (everyone has the potential to achieve) and cultural diversity. The time-honored Olympic philosophy of celebrating personal endeavour and trying to be the best we can, may be applied to so much more than just the Games. So, with all this insight tucked into our kit bag and the adrenalin pumping, only a few last hurdles remain...

Why are the athletes only being fed cheese and water?! Will our Marathon Runner ever reach the finish line? Who's going for gold?

On your marks...

**We would like to take this opportunity to invite all of our parents and extended family members to this special event. We hope you can come.**

Please find attached details of the Olympic Torch Aberdeen route. Sadly we are not on the actual torch route however we are currently arranging a time for the Olympic torch to visit our school. I appreciate that this is a very special occasion and you may wish to take your child/ren to see the Olympic Torch and take part in the celebrations. Please let us know if you require to take your child/ren out of school early on **Monday 11<sup>th</sup> June.**



## **Hi ho hi ho it's off to camp we go!**

### **P6 and P7 School Camp**

**14<sup>th</sup> to 18<sup>th</sup> May 2012**

If you have any queries please do not hesitate to contact me.





## Sports Day

Jubilee Sports Day

2:00 – till late!

Bring a picnic, deckchair and join-in with the fun.

Fun family events to follow on from Barthol Chapel sports.

*Barthol Chapel School, Church, Community Association and Youth Group*

## Music Recital Night

Following on from last year's success this year we plan to hold a music recital night on

Friday 22<sup>nd</sup> June 2011

7:00 – 9:00



## Whole School Summer Trip

Thursday 28<sup>th</sup> June

9:15 – 3:30

Aden Country Park

Farm and Farming Museum

*Please note that we have had to change the venue and date of our summer tri. This has been due to Crathes Castle not having an educational ranger this year.*

## Health Week

Week beginning Wednesday 6<sup>th</sup> June

Lots of information to follow shortly.



## Coffee Afternoon

Friday 25<sup>th</sup> May

## End of Term Celebrations

### Leavers Assembly

Friday 29<sup>th</sup> June 2:00- 3:30



## Parent Council

Next Meeting: 22<sup>nd</sup> May 2012 (7:00pm)

Any agenda points you would like to raise please contact Mrs Pamela Stroud (Parent Council Chair).

## Appendix 1 – Olympic Torch Route

# Aberdeen announces the route of Olympic Torch relay

The streets the Olympic Flame will travel through in Aberdeen and the names of the inspirational Torchbearers who will run in the city have been announced by Aberdeen City Council today [Monday 19 March].

People will be able to welcome the Olympic Flame to their street and cheer on the Torchbearers carrying the Flame and share in the excitement the Olympic Torch Relay.

The route on day 24 [Monday 11 June] of the Olympic Torch Relay will see the Olympic Flame travel through Aberdeenshire and arrive at approximately 6.25pm in Peterculter. The Olympic Flame will then travel through Bielside, Milltimber, Cults and Mannofield before heading along Great Western Road, Holburn Street and Union Street before it reaches the host city's evening celebrations at the Castlegate.

Aberdeen City Council, working with LOCOG and the three Presenting Partners of the Relay – Coca Cola, Bank of Scotland and Samsung – will host the evening spectacular to celebrate the Olympic Flame.

The exciting event at the Castlegate will be free and feature local entertainment and well-known must-see performers. Details of the show will be released over the next few months.

Day 25 of the Olympic Torch Relay will set off at 7.20am approximately from BP's headquarters in Dyce, making its way via Bucksburn and the Haudigan Roundabout to Hilton Drive, where the first Torchbearer of the day will carry the Olympic Flame.

The relay will then continue via Anderson Drive to Bridge of Dee and then make its way on to the A90 as it leaves Aberdeen and continues on its historic journey.

The streets along the London 2012 Olympic Torch Relay can be viewed in full at [www.london2012.com/olympictorchrelay](http://www.london2012.com/olympictorchrelay).

The website gives street-by-street details and proposed start times for when the Olympic Flame will travel through Aberdeen, giving residents living in and around the city the chance to find out when it will be travelling along their nearest street.



## **Appendix 2 – Holiday Dates 2012/2013**

### **Occasional Days**

Friday 8<sup>th</sup> February 2013

Monday 3<sup>rd</sup> June 2013

### **Session 2012/2013**

School starts on Tuesday 21st August 2012

- **October** - Monday 15 October to Friday 26 October 2012
- **Christmas** - Monday 24 December 2012 to Friday 4 January 2013
- **Mid Term** - Monday 11 February 2013
- **Easter** - Friday 29 March to Friday 12 April 2013
- **May Day** - Monday 6 May 2013
- **Summer** holidays start on Monday 8 July 2013

### **In-Service Closure Dates for 2012/13**

The following dates have been set as closure days for Session 2012/13:

- Monday 20 August 2012
- Monday 12 November 2012
- Tuesday 13 November 2012
- Tuesday 12 February 2013
- Wednesday 13 February 2013

## Appendix 3

**Please note that if your child is interested in learning an instrument you can register their interest on Aberdeenshire Council Website.**

**[www.aberdeenshire.gov.uk/parentscarers/information/music-service](http://www.aberdeenshire.gov.uk/parentscarers/information/music-service)**